

Frederick

Seat of one of America's
richest agricultural counties

Frederick County, Maryland . . .

- . . . is a large producer of lime and stone products.
- . . . is the home of the largest brush manufacturing plant in the world.
- . . . has much acreage under water devoted to the raising of gold fish and water lilies, ranking among the greatest producers in the country.
- . . . is widely known for its sporty mountain trout streams and its splendid bass fishing.
- . . . produces annually millions of dollars of milk and cream from fine herds of Holstein, Guernsey, Ayrshire, Jersey, and Brown Swiss Cattle.
- . . . has many herds of registered Aberdeen-Angus, Hereford and Short Horn beef cattle.
- . . . is known as one of America's finest breeding centers of pure bred draft horses, with an active Percheron Association.
- . . . is the home of noted thoroughbred race horses, including Challenger II and Challedon, his son, at the Glade Valley Farms located at Walkersville.
- . . . with its excellent facilities at the Fair Grounds, the quality of purebred stock and the accommodations of the Francis Scott Key Hotel, has become the sale center of the East.
- . . . produces and packs corn, peas, green and lima beans, tomatoes, peaches, and Irish potatoes in large quantities and these are distributed over wide areas.
- . . . holds an annual county fair, the Great Frederick Fair, recognized as one of the finest agricultural displays in the East. Its Percheron Show is among the largest in the United States.
- . . . is, by far, the richest agricultural county in the State of Maryland and ranks among the first in the nation.



Offices of the Frederick Chamber
of Commerce and AAA
are located in the
Francis Scott Key Hotel.

Hiking & Picnicing Area
Gambrill State Park

Historic

Frederick

in the heart of
Maryland



THE
**FRANCIS SCOTT KEY
HOTEL**

FREDERICK
the home of Barbara Fritchie

Historic and Scenic Frederick

Graciously served by **THE FRANCIS SCOTT KEY HOTEL**

MORE TOURISTS use the highways (U. S. 15-40-240-340) passing through Frederick, Maryland, than any other similar community in the entire United States.

Frederick's historic importance is interesting and beautiful. From the years preceding the birth of the nation, her history is one of vital concern to every American. Beautiful old colonial estates, splendidly preserved, mellowed in their charm and grace, fully deserve their growing appreciation of rich architectural beauty. On every highway leading into the City may be seen these beautiful homes, around their festive boards and before their gleaming firesides were planned many events which played so important a part in the early development of the Nation.

Here many celebrated Fredericktonians of bygone days entertained their friends—men and women of international prominence—Washington, Franklin, Lafayette, Jefferson, Braddock, Clay, Jackson, and a host of others equal in eminence. On his numerous trips through the country, George Washington spent many a night with friends in and near Frederick. It was here, in 1775, that Braddock, Governor Sharpe and Colonel Washington mapped out the campaign against the Indians in which Braddock lost his life.

Near Frederick is the birthplace of Francis Scott Key who was drawn into the thick of the British bombardment of Fort M'Henry, at Baltimore. After a night of uncertainty, aboard a British ship, he, in the early dawn, discovered the Stars and Stripes still waving to the breeze and was inspired to write our national anthem "The Star-Spangled Banner". His beautiful monument at the entrance of Mount Olivet Cemetery in Frederick marks his grave. In this same cemetery are the graves of Thomas Johnson, Maryland's first governor, and Barbara Fritchie, immortalized in Whittier's famous poem.

Roger Brooke Taney, another nationally-known character, resided in Frederick. As Chief Justice of the Supreme Court of the United States, he handed down the Dred Scott decision. He administered the first oath of office to Lincoln as President of the United States. The Taney Home (two blocks from Francis Scott Key Hotel) is a museum and contains many famous letters and other interesting historic matter.

Within three miles of Frederick (US 240) is the Battlefield of Monocacy, the battle which saved the City of Washington from capture by the Confederate forces. This is now a National Park and contains a number of interesting tablets and monuments.

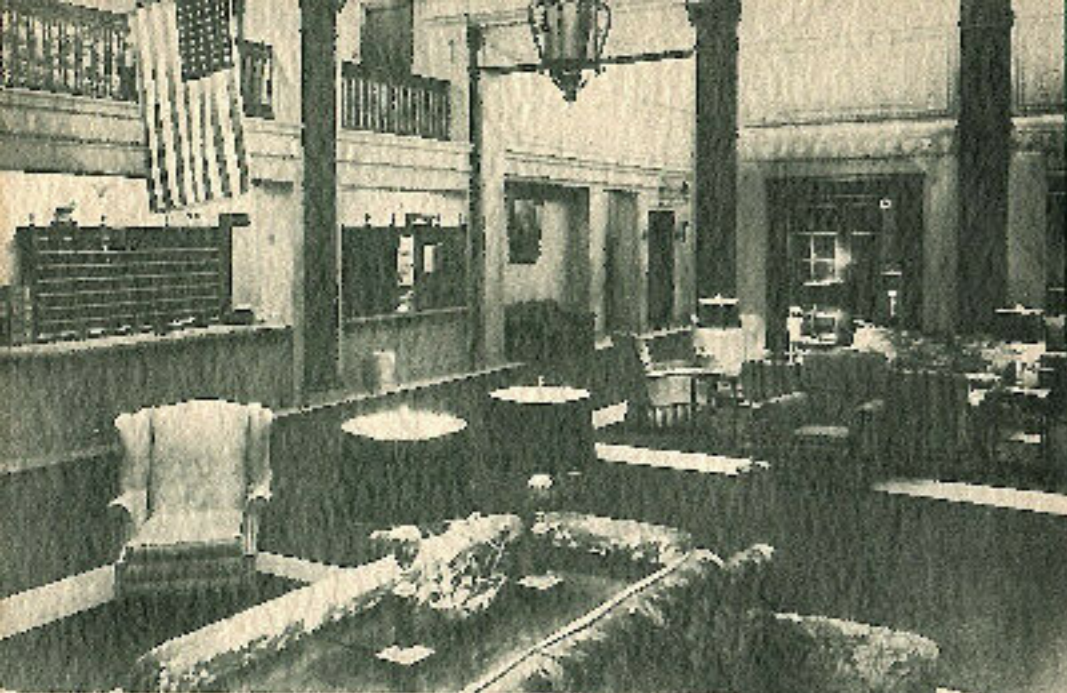
Three miles north of Frederick (on US 15) is the home of Admiral Winfield Scott Schley, hero of the Spanish-American War.

Twenty miles northwest (on US 340) is Harper's Ferry, one of the most scenic and historic places in all America. Eighteen miles west of Frederick (off US 40) is the Battlefield of Antietam, or Sharpsburg, and thirty-two miles north of Frederick at Gettysburg (US 15) was fought the decisive battle of the great Civil War.

Nestled in the heart of a rich agricultural section Frederick is in one of the most beautiful scenic sections of America. From her beautiful nearby mountain drives and state parks can be seen incomparable landscapes. Over splendid roads through Frederick one can best reach Skyline Drive and Shenandoah National Park in less than two hours driving time. It is accessible for travelers from the north and east to spend a day and night here and leave in the morning for these natural treats in Virginia. Visitors to Washington, the Nation's Capitol, the world-famous Caverns of Virginia, and Natural Bridge have selected Frederick as an ideal overnight stop, amid congenial surroundings and an atmosphere of quiet refinement.

The Francis Scott Key—a modern fire-proof Hotel of 200 rooms partially air-conditioned—is situated on a site used for a hotel since prior to 1803. In the heart of the City, directly on US 40—The National Highway—it is generally accepted as one of the finest hotels in the east, and recognized as ideal headquarters for travelers interested in studying the rich history which fills the surrounding country. Whatever your mission or objective, you'll appreciate the accommodations and the services rendered by the Francis Scott Key Hotel.

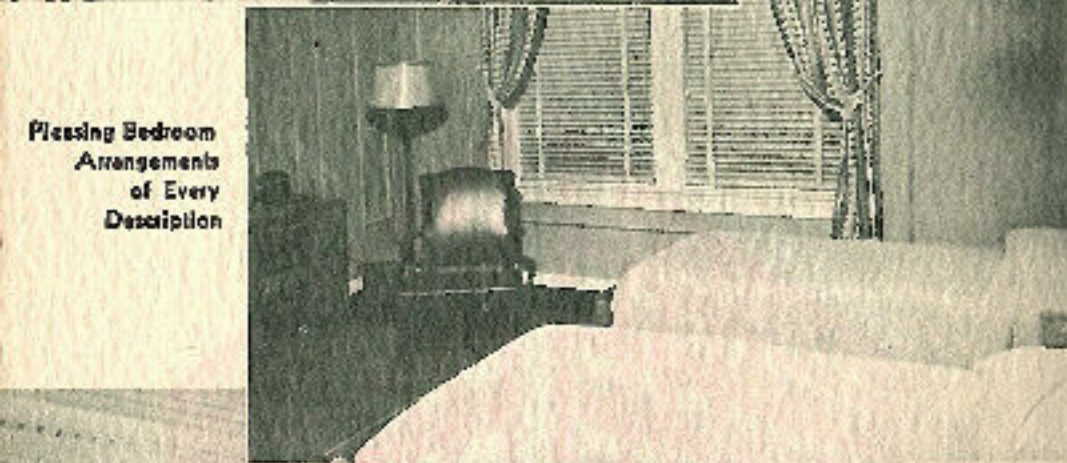
Vacationists traveling to and from Florida and the New England States, Canada, New York, Pennsylvania and Ohio, take advantage of the Pennsylvania Turnpike and convenient connecting highways to stop over night at the Francis Scott Key.



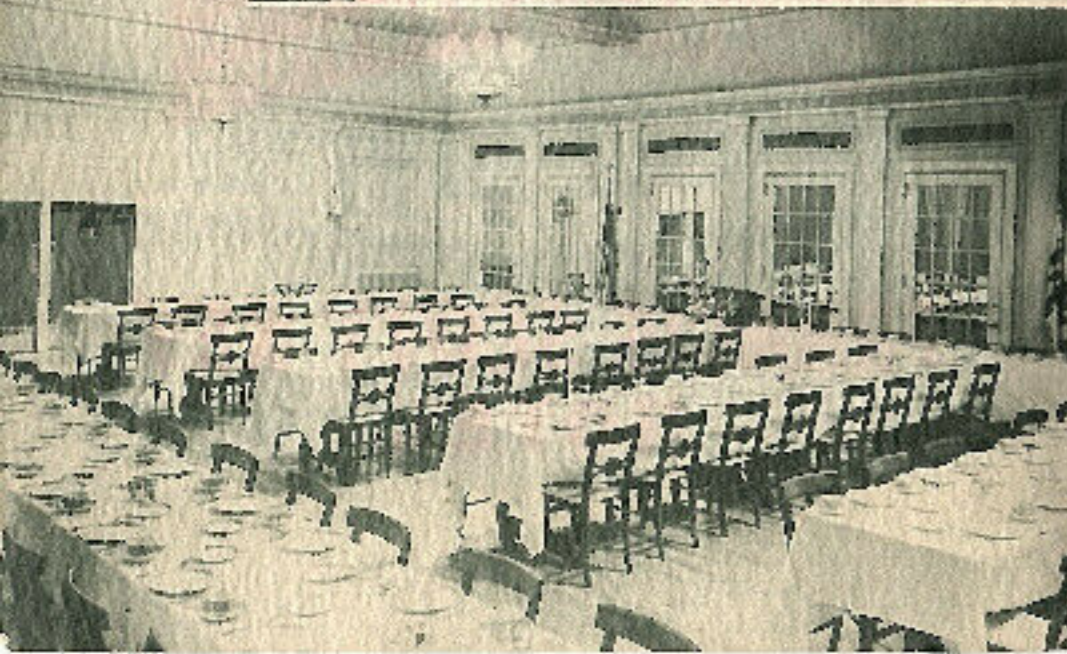
Attractive and Comfortable Lobby



Smart Air-Conditioned Coffee Room



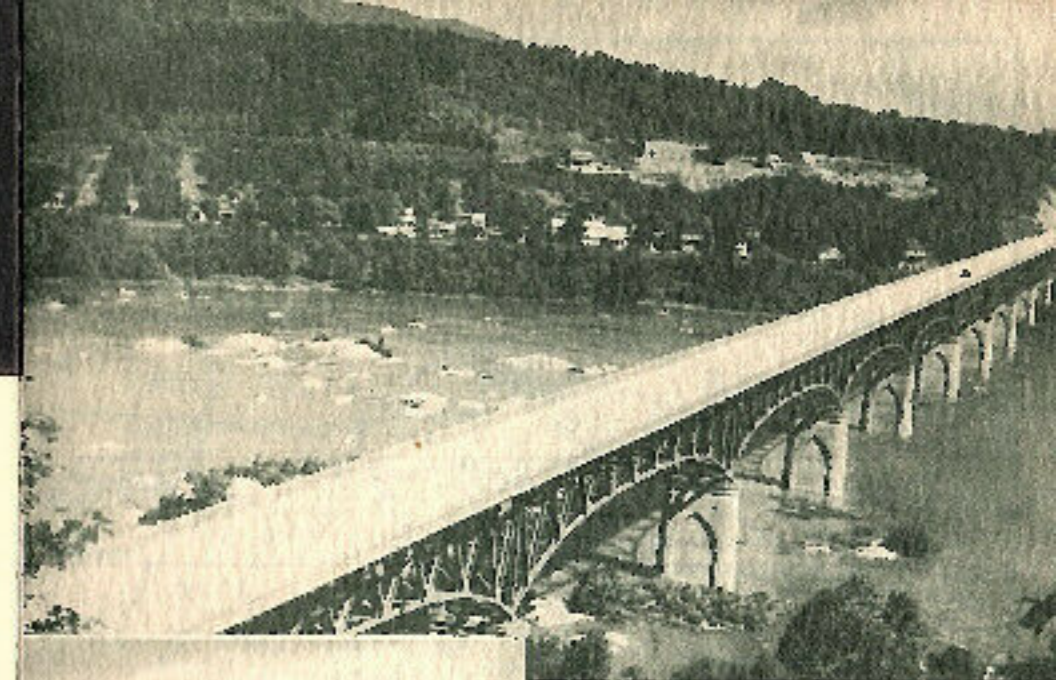
Pleasing Bedroom Arrangements of Every Description



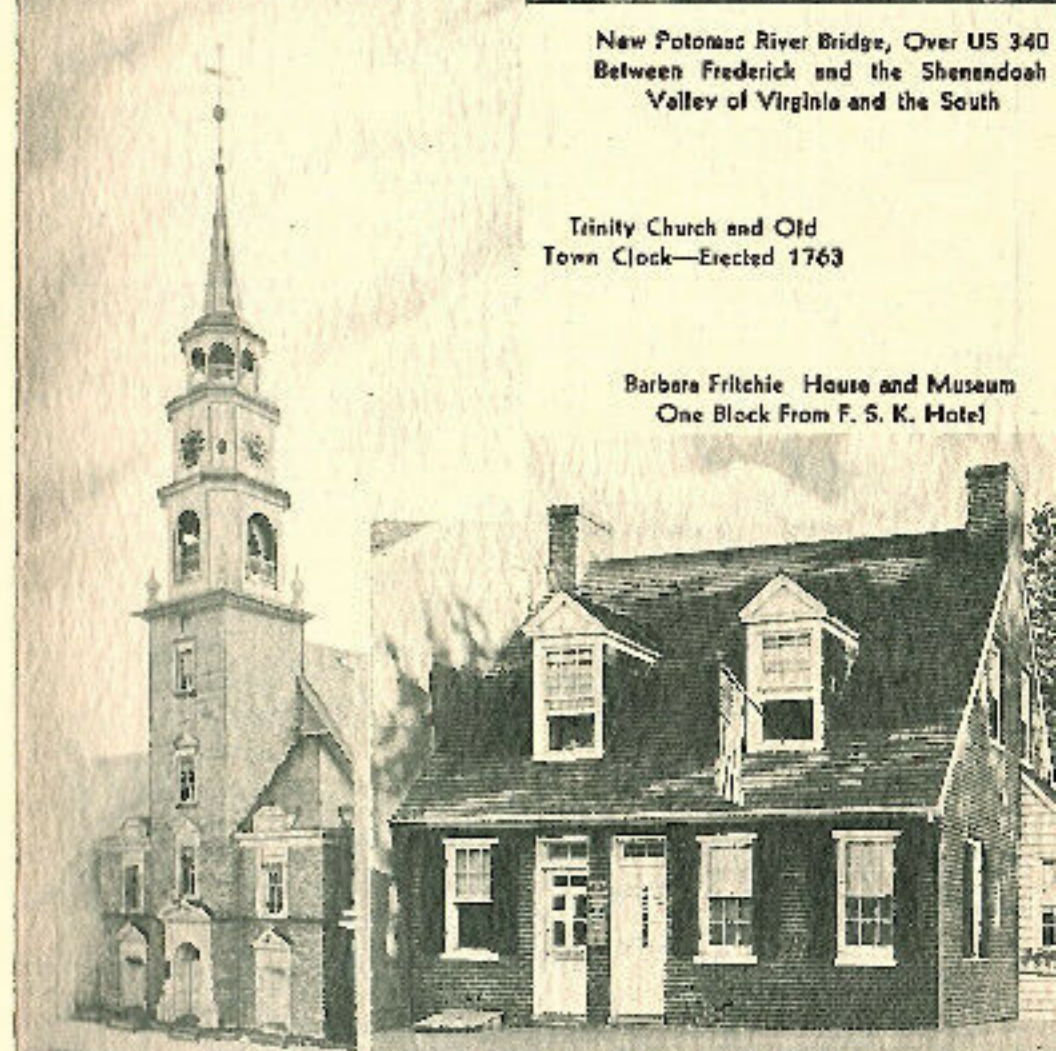
Complete Banquet and Convention Facilities



Grave and Monument of Francis Scott Key
Author of the Star-Spangled Banner

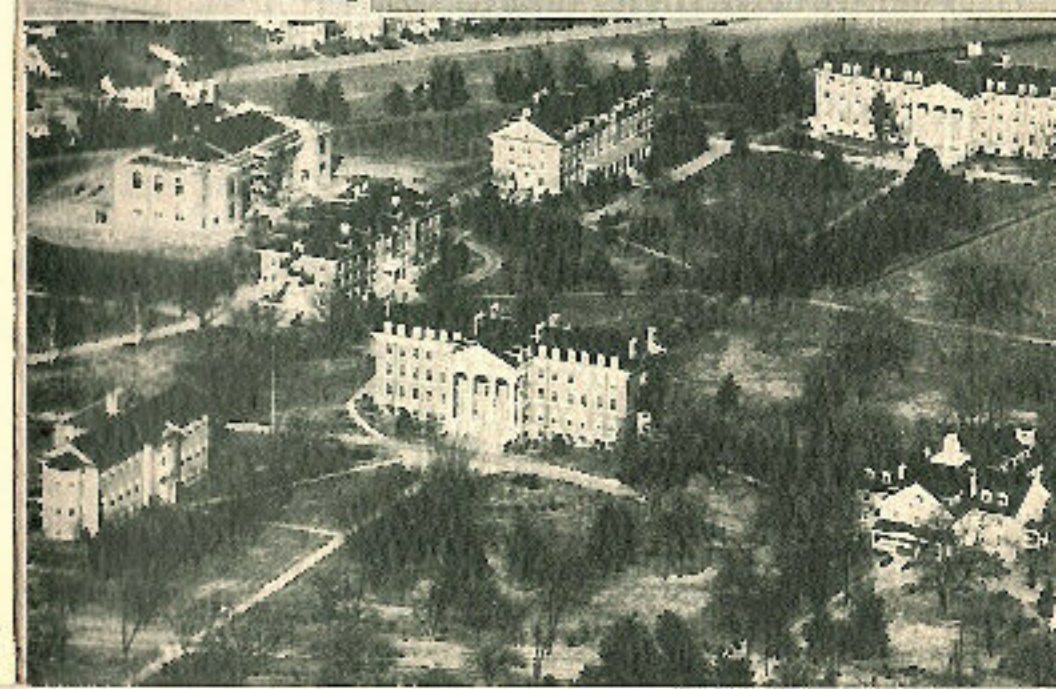


New Potomac River Bridge, Over US 340
Between Frederick and the Shenandoah
Valley of Virginia and the South

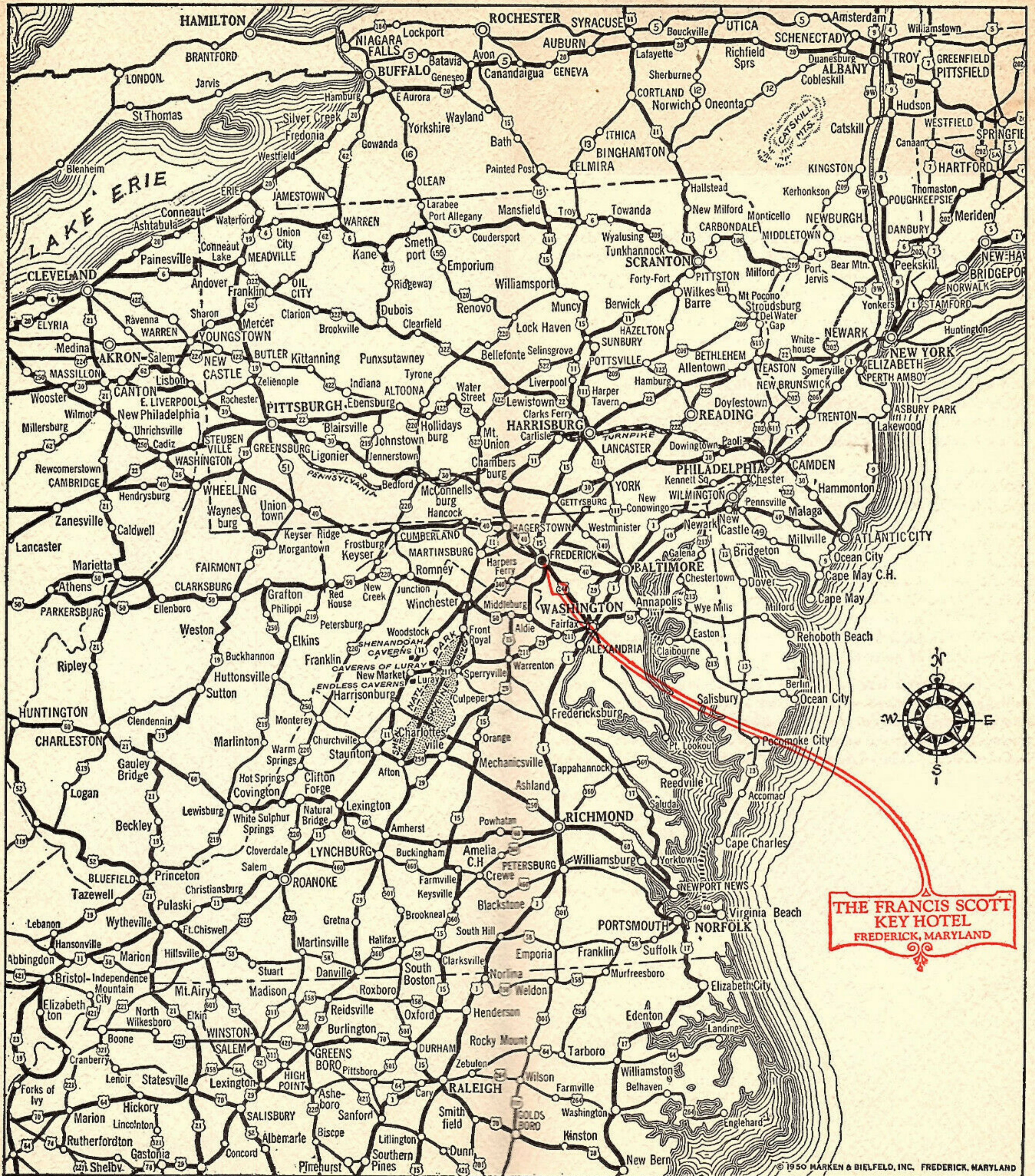


Trinity Church and Old
Town Clock—Erected 1763

Barbara Fritchie House and Museum
One Block From F. S. K. Hotel



Campus of Hood College,
Exclusive School for Young Women



**THE FRANCIS SCOTT
KEY HOTEL
FREDERICK, MARYLAND**